



Hand To Paw Thailand

"CREATING SUSTAINABLE SOLUTIONS FOR ANIMAL WELFARE"

In the remote landscapes of Northern Thailand, vulnerable animals face daily challenges: injury, illness, abandonment, and the absence of accessible care. These realities have shaped our mission: to provide rapid rescue, medical intervention, and long-term support for animals in critical need. Our work exists at the intersection of community welfare, sustainability, and compassionate action.

Recent cases underscore the urgency and impact of our efforts.

One such case involved Molly, a dog left severely injured after a hit-and-run. With life-threatening internal bleeding and a shattered leg, her survival depended on immediate veterinary intervention. With coordinated support, she underwent successful surgery and is now recovering.

Another example is a young puppy named Tommy, discovered in shock, barely clinging to life. Through intensive, hands-on care provided by our team, he stabilized, regained strength, and experienced a level of comfort and safety for the first time.

We also supported a street pup suffering from advanced sepsis and blood parasites. Although critically ill, he responded to treatment, and today lives safely in a nurturing environment, healthy, social, and thriving.

These cases illustrate the measurable outcomes that targeted action, skilled care, and sustained support can achieve.

Behind each rescue stands a network of partners whose contributions make timely intervention possible. Corporate sponsorship and Corporate Social Responsibility collaborations empower us to expand clinical capacity, strengthen community outreach, and increase the number of lives saved each year.

This brochure outlines opportunities for partnership, impact measurement, and collaborative initiatives. We invite you to explore how your organization can play a role in improving animal welfare, supporting rural communities, and contributing to meaningful and lasting change. Together, we can build a more compassionate and sustainable future for both animals and the communities they inhabit.

Contents

<i>Mission & Vision</i>	4
<i>Our People</i>	5
<i>Our Impact</i>	6 & 7
<i>Interconnected Pillars</i>	8 & 9
<i>2026 - Operating Costs</i>	10
<i>2026 - Major Projects</i>	11
<i>2025 - Year in Review</i>	12
<i>Success Stories</i>	13 & 14
<i>How to Donate</i>	15

Our Mission

Our mission is to support dogs and cats in need and to help take away their pain, whenever possible. Led entirely by volunteers and supported solely by donors, we strive to create harmony between communities and their companion animals through proactive population management, crisis response, and far-reaching educational efforts to improve local knowledge.

Hand to Paw Thailand is committed to building sustainable, community-based solutions for animal welfare across Thailand. Our work is grounded in four interconnected pillars:

Population Management : Community Outreach

Rescues & Interventions : The Temple Program

By combining hands-on veterinary care with grassroots education, we work to build a future where every animal has access to essential care and every community is equipped to be responsible stewards of their animal population.

Our Vision

A Thailand where every animal lives with dignity, and compassion leads the way.

We see communities where:

- 🐾 No dog or cat suffers from preventable disease or uncontrolled breeding
- 🐾 Rescue becomes the exception rather than a daily necessity
- 🐾 Knowledge and resources empower communities to manage animal welfare independently
- 🐾 The human-animal bond is strengthened through education, respect, and understanding
- 🐾 Traditional compassion for all living beings is translated into practical, sustainable care

Hand to Paw Thailand strives to be a catalyst for this transformation, working toward a future where our direct intervention becomes less necessary as communities build their own solutions, and where the well-being of every animal is recognized as a shared responsibility.

Our People

At Hand to Paw, every rescue, every recovery, and every life changed is powered by people who give the most valuable asset they have - *their time*.

Our caring community is the quiet force behind our mission. They show up early, stay late, respond to emergencies, transport injured animals, assist at clinics, feed, clean, educate, and comfort. They do this not for recognition, but because they believe that every animal deserves care, dignity, and a chance at life.

Because of this commitment, Hand to Paw operates with minimal overhead. Our directors, administrators and volunteers do not take salaries. Their generosity of time and effort ensures that 100% of funds raised goes directly to the care of the animals, funding life-saving medical treatment, sterilization programs, vaccinations, food, and shelter for animals in need.

When you donate to Hand to Paw, you are not only supporting animals - you are standing beside a community of people who give selflessly, so that others do not have to suffer alone.

This is what your generosity makes possible. The power of compassion, in action.



Joy Huss - Founder

Joy Huss found her life's passion working with street dogs after moving to Thailand in 2005. Following two years volunteering at a Hua Hin rescue, she relocated to Northern Thailand. Witnessing the plight of temple dogs, she co-founded Hand to Paw with a teacher from Prem Tinsulanonda International School, Chiang Mai. The program mobilized students to sterilize and care for dogs in local temples. Under her guidance, Hand to Paw grew to serve 10 temples and re-homed over 40 dogs internationally, establishing a sustainable, integral community service.



After 13 amazing years in Thailand, Joy returned home and handed the reins of Hand to Paw to Amandine Lecesne.



Amandine Lecesne - Director

Amandine Lecesne began her commitment to animal welfare in Thailand in 2005 after witnessing the suffering of street dogs. Originally drawn to the region to volunteer with Burmese refugees, her focus shifted dramatically after saving a sick puppy, realizing the immense impact of simple medical intervention like spaying and vaccination. This initial experience, and the profound connection it fostered, led her to return yearly from the US to fund and perform more sterilizations.

In 2012, Amandine moved full-time to Chiang Mai, Thailand, working as a school counselor while dedicating her non-work hours to animal rescue. She became an integral part of Hand to Paw, working alongside founder Joy Huss in the organization's early years. Today, Amandine serves as the Foundation's Director, transforming the organization into a vital safety net for dogs and cats in the region.

Under her dedicated leadership, Hand to Paw sterilizes over 3,000 cats and dogs annually, operates after-school programs that teach children respect for animals, provides care for over 150 temple dogs, and regularly intervenes in critical medical emergencies. Amandine's daily life is a testament to her dedication, balancing the non-stop demands of operating a growing rescue organization. She finds extraordinary fulfillment in transforming the lives of suffering animals, turning "untouchable" street dogs into trusting, healthy companions.

Our Impact

Dogs in Thailand don't have it easy, they risk:

- | | |
|-------------|-----------------------------|
| 🐾 Poisoning | 🐾 Parvo & Distemper virus |
| 🐾 Hunger | 🐾 Flea infestations & mange |
| 🐾 Neglect | 🐾 Road incidents |

Street dogs are often unseen. Many people think, "It's not my dog, so it's not my responsibility." ***But for us, their lives matter.***

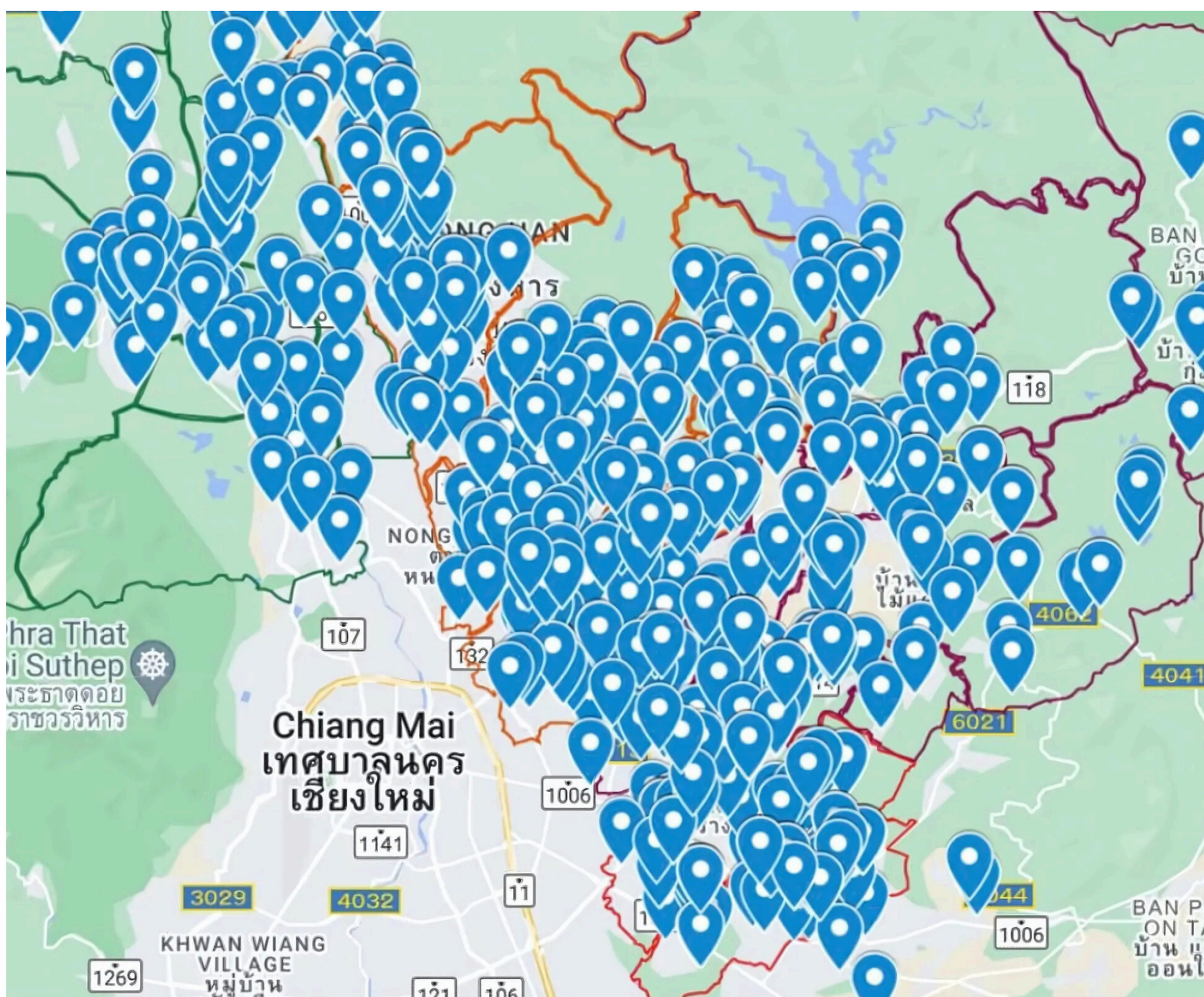
As often as our resources allow, we step in to help dogs battling cancer, victims of road accidents, animals suffering from severe tick infestations or mange, and those who have been poisoned or abused and urgently need intervention. When no one else will take an injured or sick dog to the clinic, we do, and then we fundraise to cover every cost.

To date, each year, we have sterilized more than 3,000 cats and dogs and aim to vaccinate 5,000 dogs against Rabies, Distemper, and Parvo. These efforts protect not only the animals but also the communities who live beside them.

In the past 16 years, we have initiated some incredible programs:

- 🐾 Free spay & neuter clinics
- 🐾 Mobile veterinary services
- 🐾 Targeted intervention in high-need areas
- 🐾 Local community workshops and seminars
- 🐾 24/7 crisis care for injured animals
- 🐾 Rehabilitation services
- 🐾 Medical treatment for sick strays
- 🐾 School outreach programs
- 🐾 Emergency Response
- 🐾 Training for local animal caretakers

Since 2009, Hand to Paw has been on a mission to bring hope and healing to Thailand's most vulnerable dogs. Since our inception, we've grown into one of the most trusted and active rescue groups in the country, transforming the lives of over 25,000 animals.



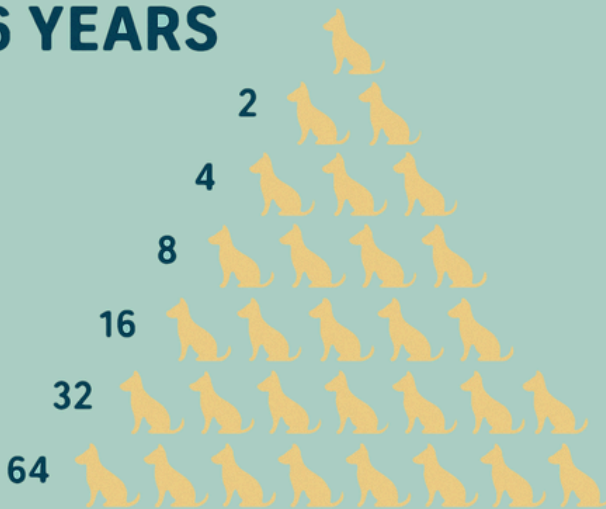
Our efforts are currently focused on areas to the north of Chiang Mai Thailand. Each pin on this map represents a location where we have performed a dog spay.

Population Management



IMPACT OF SPAYING OR NEUTERING A SINGLE DOG

6 YEARS



20,000 ANIMALS SPAYED OR NEUTERED IN CHIANG MAI IN THE LAST 10 YEARS

HAND TO PAW FOUNDATION

We are currently spaying and neutering over 3,000 cats and dogs each year. Prior to spaying and neutering initiatives, street dogs would regularly be culled via mass poisonings. These spay events provide free, effective and convenient population management solutions to the local community. Spaying a single roaming cat or dog equates to around 100 additional animals from being born just to suffer. This program is by far the best investment of resources.

Community Outreach



Our Community Outreach programs emphasize the importance of population management, raise awareness of contagious disease prevention, and promote responsible animal care. Alongside education and training, we provide essential supplies to families living below the poverty line who struggle to care for their animals, occasionally constructing basic outdoor shelters or exercise runs to keep their animals safe and healthy.

PILLARS

Rescues & Interventions



Through the incredible generosity of our donors, we've vaccinated, treated, and rehabilitated countless dogs who were suffering in unimaginable ways. From those left to fend for themselves on the streets to paralyzed rescues requiring specialized care, our work has always been about giving these animals a chance to live with dignity, love, and safety.

This is a photo of "Caramel" one of many success stories.

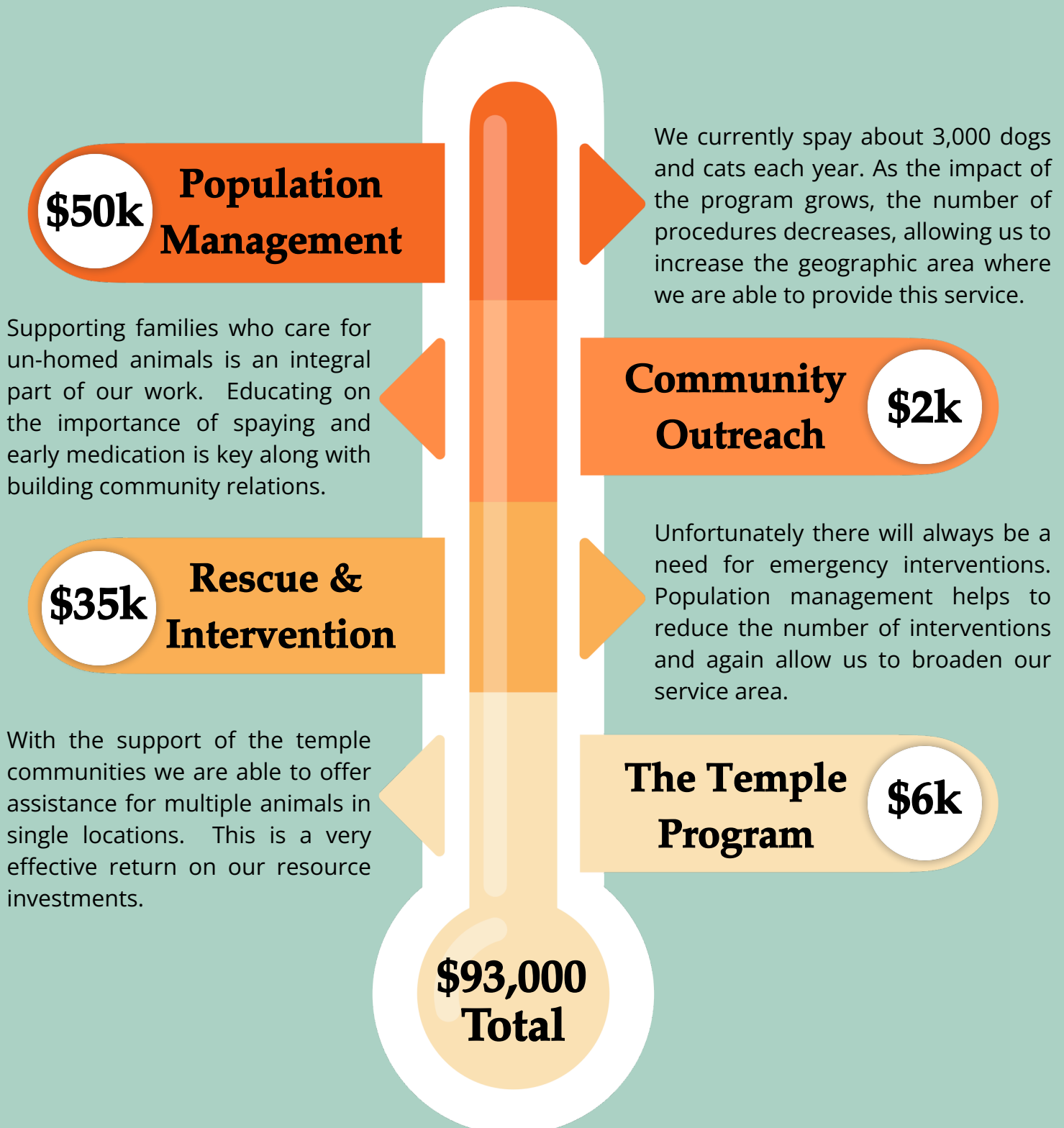
The Temple Program



There are currently 15 temples participating in the Temple Program. Regular visits are made to each temple to monitor the wellbeing of the animals living there, approximately 150 animals in total. Food is provided by most temples, with a small number supported by local donors. Hand to Paw covers all medication, vaccinations, and emergency medical costs for the animals ensuring consistent care and rapid response when it is most needed.

2026 - Operating Costs

Key goals for 2026 can be separated into 2 components: Operational Goals for expanding the reach and impact of our existing programs, and Project Goals that expand our infrastructure and facilities to support those Operational Goals.



The Hand to Paw Sanctuary

Hand to Paw strives to return rescued animals to the locations that they came from so they return to somewhere familiar. When this is not possible we provide the animal a long term home at our Sanctuary.

As the number of animals under our care increased over the years it became necessary to move to a larger facility and away from neighborhoods where the noise could be excessive to local families.

Due to growing urgency around a long term solution, in 2025 we made the decision to build the facility even though we had only raised about 20% of the necessary funds. To expedite the construction our Director generously chose to loan the foundation the construction balance from her personal funds so that we could begin the project.

Total project cost
(phase 1)

\$350,000

Outstanding Funds to
be raised

\$270,000

Stretch Goal #1 Paralysed Dog Area

A dedicated space within the sanctuary for dogs with specialized needs.

\$2,000

Stretch Goal #2 Rehabilitation Pool

Physio Therapy treatment for dogs recovering from major surgery.

\$2,000

Stretch Goal #3 Recovery Kennels

Overnight and short term kennels designed for animals recovering from surgery.

\$1,000

2025 In Review

2025 was a year of continued expansion and progress with increasing clarity on our vision and organizational structure. We have had tremendous support from local sponsors, providing funding and positive feedback, helping us achieve our 2025 goals.



Population Management

Just under 3,000 spays in 2025. Spay Events targeted to increase by another 10% in 2026. Increasing spay events by an additional 10% next year will ultimately reduce long term costs across other programs.



Community Outreach

Our Community Outreach initiatives increased, with a focus on educating communities about animal welfare and responsible care. Donations of essential items to local families caring for street animals has increased.



Rescue & Interventions

We currently respond to around 30 road-accident rescues each year. With sufficient funding, we can provide faster, more effective treatment and extend help to more animals across a wider area.



The Temple Program

In 2025, Hand to Paw has supported over 150 temple animals, providing medication, vaccinations, spay treatment, and coordinating regular feeding programs with monks and temple volunteers.



The Sanctuary



The Hand to Paw Animal Sanctuary, constructed in 2025 in northern Thailand, is a dedicated safe haven for vulnerable, abandoned, and injured dogs. Set on a serene rural property, the Sanctuary currently provides a permanent and nurturing home for 51 rescued dogs, with future expansion plans to include:

- On-site veterinary clinic & emergency treatment
- Rehabilitation dog swimming pool
- Overnight kennel facilities
- Community outreach and sterilization programs

Initial construction of the Sanctuary has been funded through loans and donations and built out of love, determination, and a belief that every dog deserves a chance at a better life. As the Sanctuary expands, so too does its dream: to offer world-class care for Thailand's most vulnerable street dogs.

Success Stories

Every rescue we complete is a story of hope, compassion, and second chances; all made possible by our incredible donors and sponsors. Their kindness turns suffering into safety, fear into love, and abandoned animals into cherished family members. Here are some of the lives they have helped transform.



Caramel was in a heartbreaking state when we found him walking along the side of the road. He was just a puppy, barely three months old, but his paws were raw and swollen, and his tiny body was covered in open sores from severe mange. His face was so inflamed it was hard to believe he was still a baby.

Normally, mange gets treated in the field, but Caramel was so sick and fragile. We rushed him to the clinic, where he was hospitalized for several weeks to help him stabilize and heal. Despite his pain, he remained incredibly sweet, so gentle and trusting, even after all he'd endured.

As he recovered, Caramel's playful spirit began to shine through. His skin healed, his swelling reduced, and he began to look and act like the puppy he was meant to be. We knew then that he deserved a forever home and a future filled with kindness.

For now, Caramel's with us, safe, happy, and waiting for that perfect family to come along.



Moonlight was found unable to eat, her jaw hanging broken and useless. Her eyes were sharp and striking, and at first, we assumed she'd been hit by a car. But after examining her, the doctors believed her injuries were caused by a person, likely struck in the face with a heavy object. It was a brutal thought, and one that made her resilience all the more remarkable.

Despite the trauma, Moonlight made a full recovery after surgery. She was still so young, and once healed, she embraced life with such enthusiasm, devouring her meals and lighting up at the sight of toys. We couldn't imagine sending her back to a place where she might face that kind of harm again, so we made the decision to keep her safe with us, for good.

Though she still doesn't let us touch her, she makes her needs clear, barking for us to come play or toss her a toy. She's built trust in her own way, on her own terms, and we're privileged to be part of her world.



Apple was one of the most heartbreaking rescue cases we had ever seen. When we found her, she was little more than skin and bones, ravaged by mange, her skin raw and bleeding. She had survived on the streets of a remote mountain village, where no one claimed her. Villagers tossed her scraps of rice, but she was never spayed and grew weaker with every litter she gave birth to. Her spirit seemed dimmed, and she was terrified of humans. Catching her for treatment took time, patience, and eventually, a humane trap.

In our care, Apple slowly began to heal. Within weeks, her skeletal frame started to fill out, and soft fur began to return. As her body recovered, so did her trust. She started to play, cautiously at first, then with full, joyful abandon. Watching her transform from a frightened soul into a playful pup was nothing short of miraculous.

Around the same time, tragedy struck her old village, a poisoning campaign wiped out most of the street dogs. The thought of returning Apple to such danger was unthinkable. She had survived too much to go back to a life of fear. So, we kept her. Now Apple runs with unfiltered joy, her tail wagging, her face lit with a wide, unmistakable smile. She is safe, loved, and finally home.



Namcha was brought to one of our spay days by monks from a local temple who asked if we could help her. When we took a closer look, we realized she was paralyzed and severely wounded, likely struck by a car and left to drag her back legs across pavement for months. She was in pain, infected, and her bones were exposed. It was heartbreaking.

At the time, we had no facilities for paralyzed dogs, so we reached out to another organization for help, but their space was full. Leaving her at the temple wasn't an option, it would have been a death sentence. So, we turned to our supporters. With their help, we built a paralyzed dog area with tiled floors to prevent further injuries, raised funds for a wheelchair, and got Namcha the medical care she needed to heal.

From her first days with us, Namcha has shown a love for water. We often find her sitting contentedly in the pond behind our center, and she'll even bark to be placed in the small wading pools we've created for the dogs.

Recently, we gave her the surprise of a lifetime, we drove 13 hours to the sea. After a few minutes of exploring, she lit up with pure joy. Dogs rely on us to make their lives extraordinary, and we're committed to making that happen.

How To Donate

Your support is the lifeline for these animals. With your help, fear turns into joy, and countless cycles of suffering are broken.

We receive no government funding, and all directors and administrators volunteer their time; **100% of your donation** goes directly to saving and caring for the animals.

Thank you for believing in our mission and for giving hope where it's needed most.



www.handtopawthailand.org/donate

BE PART OF THEIR FUTURE & THE SOLUTION!

Hand to Paw is a registered foundation in Thailand and a 501(c)(3) organization in the United States (under the name "Friends of Hand to Paw Foundation Thailand").

Donations made to our 501(c)(3) account in the U.S. are tax-deductible, giving you the opportunity to support our work while receiving a tax benefit.





Hand To Paw Thailand



www.handtopawthailand.org



[handtopawthailand](https://www.facebook.com/handtopawthailand)



[@handtopaw_thailand](https://www.instagram.com/handtopaw_thailand)